

HCCI Combustion in a Diesel Engine using Oxygenated Fuels and Various Operating Parameters – A Review

Gangeya Srinivasu Goteti ¹, Tamil Selvan. P ²

¹ Research Scholar, School of Mechanical and Building Sciences, VIT University, Chennai-600127, India.

² Associate Professor, School of Mechanical and Building Sciences, VIT University, Chennai -600127, India.

(¹ ggsvas@gmail.com, ² tamilselvan.p@vit.ac.in)

Corresponding Author: Gangeya Srinivasu Goteti, School of Mechanical and Building Sciences, VIT University, Chennai-600127, India.

E Mail: ggsvas@gmail.com, ph: +91 9849490282.

Received: 14.01.2017 Accepted: 11.03.2017

Abstract- The growing attention on the environment, revived research interests on the usage of alternative energy sources for diesel engines and to improve the combustion efficiency of the engines. In this regard a new concept of HCCI (Homogeneous Charge Compression Ignition) combustion technology has been considered which promotes highly efficient combustion and produce low emissions and also usage of oxygenated fuels in HCCI engines leads to reduction in emissions like hydrocarbon (HC) and carbon monoxide (CO), since HCCI has increased HC and CO emissions. HCCI offers less pollutant emissions like NO_x and PM. HCCI engine technology is the most adoptable technology for next generation engines to reduce emissions for cleaner environment. This study investigates the effects of the oxygenated fuels, ignition improvers and operating conditions on the HCCI combustion and emissions from it. HCCI combines the characteristics of Spark-Ignition (SI) and Compression Ignition (CI). HCCI engines can operate on gasoline, diesel and most alternative fuels. This paper reviews the parameters involved in HCCI engine technology that fuelled with alternate fuels having high oxygen percentage and also the challenges involved in HCCI combustion.

Keywords: Homogeneous Charge Compression Ignition (HCCI), Oxygenated Fuels, NO_x, PM, HC, CO₂, EGR.

1. Introduction

Compression Ignition engines are the major sources for transportation and for other applications. These engines consume maximum amount of fuel to produce power and emits harmful exhaust gases which include CO, HC, NO_x and PM. SI and CI engines use conventional fuels and both have their own drawbacks. The growing concern over the global warming and pollution standards revived research interests on the usage of alternative energy sources for diesel engines using new concept of HCCI/PCCI combustion [18, 19] since it promotes highly efficient combustion and produces lower emissions, usage of oxygenated fuels in HCCI engines also done by researchers now a day's to promote further reduction in emissions like HC and CO which are particularly high in these engines. CI has the advantages like good thermal efficiency and low fuel consumption but suffers from high NO_x and PM pollutants due to its heterogeneous combustion and maximum heat release rate during combustion [84, 85]. HCCI concept have the advantage of lesser NO_x and PM emissions compared to conventional diesel engines due to its methodology of homogeneous combustion and lower heat release rates during combustion, on the other hand it is obvious that the

preparation of homogeneous air- fuel mixture is a crucial for HCCI combustion during the engine operation, especially for direct fuel injection. HCCI mode is suitable for limited load and speed conditions so far, this limits HCCI combustion range and to shift for conventional CI mode continuously in operating conditions.

2. Concept of HCCI

HCCI is the phenomenon of obtaining the fuel and air homogeneous mixer before combustion starts and the mixture auto-ignites as a result of compression stroke which causes the temperature to rise[50]. HCCI is the combustion concept of both SI and CI engines. Here the combustible mixture is drawn to conditions familiar for self-ignition as in conventional CI engines, with homogeneous air fuel mixture as in SI engine. In HCCI mode of combustion, the homogeneous mixture is prepared and self-ignited in a single time throughout the total combustible mixture due to increase in temperature by the stroke of compression and this fact is found by optical diagnostic research methodology[87]. HCCI offers complete combustion due to homogeneous charge. HCCI is a concept which is developed in response to the need of lower NO_x and PM emissions and higher

efficiency. Reducing HC and CO emissions is much easier in HCCI than reducing NOx and PM from emissions in CI engines. HCCI concept can overcome all the technical issues but requires utmost attention. Regulating the rate of heat release, combustion initiation and homogeneous mixture preparation are major research obstacles in practical implementation of this technology. Comparison of HCCI and CI engines is shown in **Table 1**.

Table1: Comparison between Conventional CI and HCCI

S.No	Comparing Parameters	CI Engine	HCCI Engine
1	Efficiency	High	Equally High
2	PM and NOx emissions	More	Less
3	Ignition Temperatures	1600 ^o C to 1800 ^o C	1200 ^o C to 1500 ^o C
4	Ignition Period	High	Less
5	Combustible Mixture	Heterogeneous	Homogeneous

Source: References [23, 27, 50, 59]

Figure 1 shows the mode of combustion for HCCI compared with CI and SI engines indicating low temperature combustion without flame front propagation. Flame front creates high temperature regions for NOx formation.

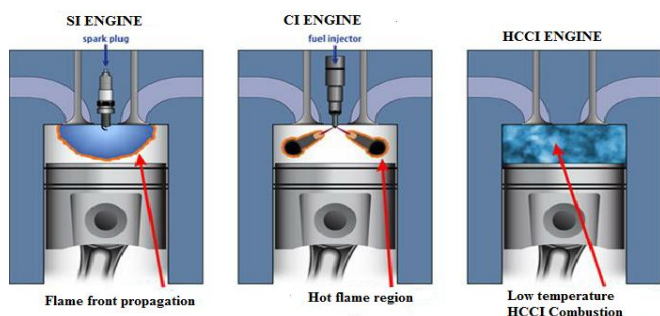


Fig.1: HCCI combustion without Flame front [90]

Two-dimensional images of the chemiluminescence using framing camera for an optically accessible engine fuelled with DME by Lida et al[69], indicating homogeneous and heterogeneous combustion processes by mixing air with fuel in intake manifold is shown in figure 2.

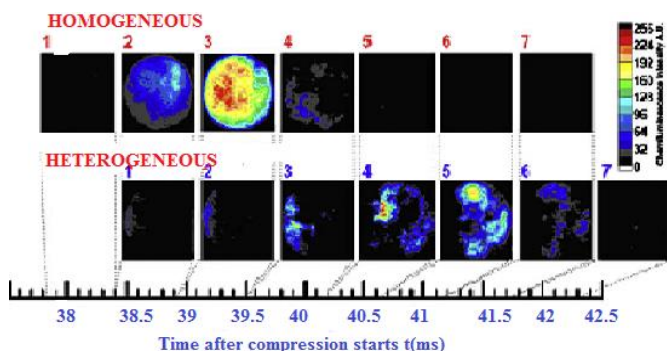


Fig.2: Homogeneous combustion compared to Heterogeneous combustion [69]

3. Use of Oxygenated Fuels

The requirements of specific fuel consumption, torque, power induced and emissions are highly influenced by the chemical composition of the fuel we have supplied. The Oxygenated fuels are suitable conventional fuel alternatives when we are used in advanced combustion concepts like HCCI. Oxygenated fuels commonly used by the researchers for evaluating engine performance and emission characteristics are alcohols and ethyl or methyl esters of biodiesels. The blending of these fuels with conventional fuels will provide necessary oxygen levels for effective combustion and helps to emit CO₂ instead of carbon rich particles like CO and also these fuels are helpful to reduce particulate matter (PM) emissions but care should be taken that the use of more Oxygenated fuels will promote more fuel consumption compared to power output [60]. Blending of these fuels with conventional fuels will also reduce cetane number since oxygenated fuels (alcoholic) have negligible cetane value. Since HCCI emits high HC and CO pollutants, Oxygen enriched fuels promotes complete combustion [45] which in turn results in less pollutants [47], when used in conventional and HCCI engines. The properties of these fuels are closer to conventional fuel properties which in turn make them to use and mix with conventional fuels to run engines which are suitable for alternative fuel combustion [60].

Properties of these fuels are indexed in Table 2.

4. Use of Ignition Improvers

The Ignition improvers are also called as cetane number improvers. The combustion quality of the diesel fuel with other blends could be improved by adding ignition improvers. Diesel fuel blends with improper cetane numbers could cause rough engine operation. The time delay between the injection and spontaneous combustion of the fuel could be decreased by adding ignition improvers by increasing the diffusion rate, which also could minimise the cold starting problems of diesel engines especially at higher altitudes. The NOx emissions could be effectively reduced by adding ignition improvers because of their high latent heat of vapourization and also the ignition improvers could cause reduction in HC emissions because of its high oxygen percentages [86]. Another consideration is also there that decrease in the cetane number improved the ignition delay period which in turn cause reduced smoke emission [88].

So by adding ignition improvers like DEE, DME etc to diesel fuel blends at optimum level only [72] leads to further reduction of emissions by allowing the fuel blends to evaporate immediately and also to maintain the blend cetane value to the required extent.

The properties of ignition improvers permit them to use as fuel additives because of their

- Higher cetane value
- Volatility
- Higher latent heat of vaporization
- Non corrosive nature
- Lower auto ignition temperature
- Miscibility with Diesel

Some of the properties of these ignition improvers compared to Diesel are indexed in Table 3.

5. Review of Literature

Research conducted by Rakesh Kumar Maurya et al [1] on combustion and emission characteristics of HCCI engine fuelled with ethanol showed that the relative air–fuel ratio (2.0–5.0) and intake air temperature(120⁰–150⁰C) have significant effect on the thermal efficiency, combustion efficiency. NOx emissions are lower than 10 ppm however HC and CO emissions are higher. Morteza Fathi et al [2] conducted experiments on HCCI engine using natural gas and n-heptane with various Exhaust Gas Recirculation (EGR) levels. Heat transfer rate decreases with EGR addition with lower specific fuel consumption, NOx emissions but HC and CO emissions are in increased trend. K Senthil Kumar et al [3] conducted performance test on a Diesel engine using ethanol blended biodiesel. Experimental results reveal that increased inlet air temperatures (40⁰ to 60⁰ C) and advanced injection timings (12⁰, 15⁰, 18⁰ BTDC) caused in reduction of HC and CO emissions and increased NOx emissions. Javad Rezaei et al [4] investigated the characteristics of HCCI combustion using oxygenated fuels (i.e. butanol and ethanol). The thermal efficiency is higher at higher butanol volumes due to HCCI combustion. Su Han Park et al [5] conducted investigations on HCCI engine by varying the injection of Diesel and DME as 10 mg and 16.4 mg respectively, which showed lesser HC, CO and soot emissions than diesel, and higher NOx emission in DME combustion. K. Mathivanan et al [6] investigated multiple fuel injection strategies on HCCI engine fuelled with diesel. The increased thermal efficiency with reduced HC and smoke emissions were observed with multiple fuel injection strategies compared to those of single point injection. Ahmet Uyumaz et al [7] used the concept of higher intake air temperature with the fuel blend of 20% n-heptane and 80% isooctane with reduced valve lift for trapping exhaust gases. The in-cylinder pressure and heat release rate were decreased with stable HCCI combustion by trapping exhaust gases results in avoid knocking especially at higher loads. Based on above review the summary of details is indicated in Table 4.

6. Strategies to adopt HCCI Combustion

From the above review it has been observed that even though using oxygenated fuels in HCCI engines in some experiments, HC and CO emissions were in increased trend because of drawback of its combustion phenomenon, to avoid that there is a need to regulate instantaneous combustion [45] and also need for to ensure complete combustion. Later there is a need to improve the evaporating capacity of the fuel using ignition improvers and changing of operating conditions like injecting the fuel in pulses using multiple fuel injection strategies. EGR in high fractions [2, 55] increases HC and CO emissions, so there is need to regulate EGR fractions. HC and CO emission gets be reduced by increasing compressions ratios [8]. Premixed combustion and spray atomization also regulates HC and CO emissions [17]. The stratification strategy and by low

temperature combustion using small exhaust gas proportions can improve operating ranges to higher loads[50].

Figure 3 shows the ideal combustion region for both HCCI and CI engines for to reduce emissions of UHC, NOx and CO and to reduce soot production[89]. Ideal combustion region is more practical for HCCI engines because of its lower combustion temperatures(1200⁰C to 1500⁰C).

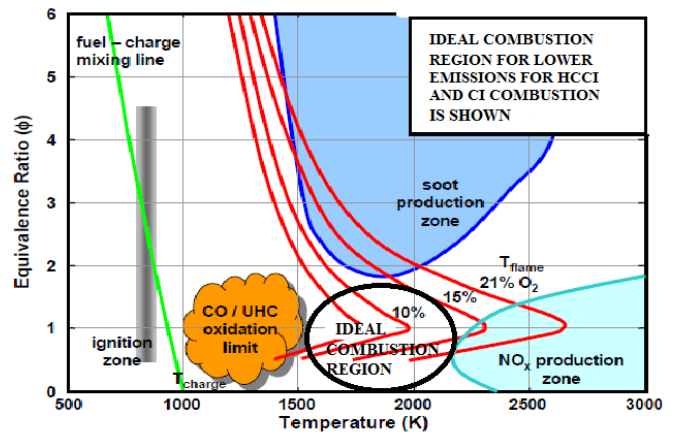


Fig.3: Ideal combustion region for lowest emissions[89]

It has been observed that in addition of using oxygenated fuels, ignition improvers [83,21], changing of some operating conditions for the HCCI engines leads to further reduction of HC and CO emissions. Multiple fuel injection strategies can be used for to improve the performance of HCCI in different operating conditions [70].

The HCCI mixture formation could be achieved by following methods for CI engines

- High intake air temperature
 - Exhaust Gas Recirculation
 - High equivalence ratios
 - High intake pressures and highly delayed combustion timings
 - External mixture formation techniques
 - Injecting diesel in pulses using multiple fuel injection strategies
 - Port injection technique
 - Oxygenated fuels with ignition improvers
- Source: References [41, 64, 69, 80]

The major challenges for HCCI Combustion includes

- The difficulty in combustion phase control which depends on properties of the mixture and exposure to time temperature history.
 - Cold starting problems since operating temperatures of these engines are less compared to conventional engines so there is need for to start with conventional mode.
 - Homogeneous mixture preparation which requires homogeneity in combustible mixture that requires elevated intake air temperatures for immediate evaporation and mixing of fuel with air.
 - Unburnt hydrocarbons and CO emissions because of lowest operating temperatures of HCCI.
- Source: Reference[50]

Table 2: Properties of some Oxygenated fuels compared to Diesel

S.No	Fuel	Molecular Wt. (g/mol)	O ₂ (wt %)	LHV(MJ/l)	Stoichiometric A/F ratio	Boiling point (°C)
1	Methanol	32.04	0.50	15.8	6.46	64.7
2	Ethanol	46.0	0.35	21.4	8.98	78
3	n hexanol	102.16	0.16	29.3	12.15	175
4	n propanol	60.09	0.27	24.7	10.33	97
5	n-butanol	74.11	0.22	26.9	11.17	118
6	Iso-propanol	60.09	0.27	24.1	10.33	83
7	Iso butanol	74.11	0.22	26.6	11.17	108
8	Diesel	198.4	0	35.06	14.95	125-400
9	Gasoline	111.19	0	30-33	14.58	27-225

Source: References [20, 12]

Table 3: Comparison between properties of DME and DEE with Diesel

S.No	Property (unit)	DME	DEE	Diesel
1	Chemical structure	C ₂ H ₆ O	C ₂ H ₅ OC ₂ H ₅	–
2	Carbon content (mass %)	52.2	64.86	86
3	Hydrogen content (mass %)	13	13.5	14
4	Oxygen content (mass %)	34.8	21	0
5	Liquid density (kg/m ³)	667	713	831
6	Cetane number	>55	>125	39–50
7	Auto ignition temperature (K)	508	433	522
8	Stoichiometric air fuel ratio	9.0	11.1	14.6
9	Boiling point at 1 atm (K)	248.1	307	450–642
10	Lower heating value (MJ/kg)	27.6	33.9	42.5
11	Kinematic viscosity of liquid (cSt)	<0.1	0.23	3

Source: References [21, 22, 17, 61, 93]

Table 4: HCCI Emissions and Performance using various Operating Parameters and Fuel blends

S.No	Blended Fuel	Operating Parameters	Efficiency Parameters	Emissions
1	Ethanol	Higher Relative Air–Fuel Ratio and Intake Air Temperatures[1,13]	Thermal Efficiency, Combustion Efficiencies are High	NO _x Emissions are Lower, HC and CO Emissions are Higher
2	Natural Gas and N-Heptane	Exhaust Gas Recirculation[2]	Reduced fuel consumption	Reduced NO _x Emissions and Increased HC and CO Emissions
3	Ethanol blended Biodiesel	Increased Inlet Air Temperatures and Advanced Injection [3]	Increased Peak Cylinder Pressures and Heat Release Rates	Reduced CO and HC and Increased NO _x Emissions
4	Diesel	Multiple Fuel Injection[6,34]	Thermal Efficiency Increased	The HC and Smoke Emissions are Lower with increased NO _x
5	20% N-Heptane, 80% Isooctane	Increased Inlet Air Temperatures, Exhaust Gas Trapping by Reduced Valve Lift [7]	Increased Indicated Thermal Efficiency	Low NO _x emissions
6	DME	EGR, Multiple Injection[17,80]	No Change	Lower HC and CO Emissions
7	N-Butane with DME	Conventional Engine[16]	Power Output Improved	Soot and NO _x Emissions were Comparable
8	Mixtures of n-heptane and iso-octane	Increased inlet temperature, EGR temperature, equivalence and compression ratio[8]	Reasonable indicated efficiency with increased overall reactivity	Decreased emissions of CO and HC, CO ₂ increased
9	70% Ethanol	High intake pressures, high equivalence ratios and highly delayed combustion timing[11]	High power output, low ringing tendency	Low NO _x emissions

6. Conclusion

The HCCI concept has the ability to produce lower NO_x and PM emissions while maintaining the thermal efficiency near to that of conventional CI engines. The main limitations of HCCI combustion are regulating its rapid combustion or its instantaneous combustion, homogeneous mixture preparation, controlling of HC and CO emissions, rapid pressure rises and knocking at maximum loads. HC and CO emissions can be controlled by blending with oxygenated fuels. Multiple injection strategies have been developed in order to extend the operating load range and to reduce HCCI emissions.

The fundamental concerns to gain HCCI combustion are by varying the mixture ratios for self-ignition, by using multiple injection strategies, varying the ignition delay period and temperatures to which the mixture is exposed, varying the conventional fuels with oxygenated fuel blends and also by using ignition improvers to improve evaporative properties of HCCI fuels and cetane number there by to ensure homogeneous mixture preparation.

HCCI is the advanced clean and complete combustion concept, but there is need for to bridge the gap between the fuel properties and operating parameters to ensure complete HCCI technology and to replace conventional CI system. There is need for to improve its operating range performance at various load and speed conditions. The HCCI concept will become more practical throughout the operating range by switching over to multiple mode combustion processes, by using various operating conditions and by varying fuel properties.

Acknowledgement

This study is based on the various articles from the journals which have been mentioned in this review work and the authors are grateful to the authors, editors and publishers of so mentioned in this article.

Nomenclature

DEE	Di Ethyl Ether
DME	Di Methyl Ether
HC	Hydro Carbons
HCCI	Homogeneous Charged Compression Ignition
PCCI	Premixed Charged Compression Ignition
CI	Compression Ignition
SI	Spark Ignition
NO _x	Nitrogen Oxides
PM	Particulate Matter
CO	Carbon Monoxide
CO ₂	Carbon Dioxide
ppm	parts per million
EGR	Exhaust Gas Recirculation
LHV	Lower Heating Value
A/F	Air Fuel Ratio
UHC	Un burnt hydrocarbons

References

- [1] Rakesh Kumar Maurya and Avinash Kumar Agarwal “Experimental study of combustion and emission characteristics of ethanol fuelled port injected homogeneous cecome charge compression ignition (HCCI) combustion engine” *Applied Energy* 88 (2011) pp1169–1180.
- [2] Morteza Fathi, R. Khoshbakhti and M. David “The influence of Exhaust Gas Recirculation on combustion and emissions of n-heptane/natural gas fueled Homogeneous Charge Compression Ignition engines” *Applied Energy* 88 (2011) pp4719–4724.
- [3] K.Senthil Kumar and Thundil kruppa Raj “Effect of fuel injection timing and elevated intake air temperature on combustion and emission characteristics of dual fuel diesel engine” , *Procedia Engineering* 64 (2013) pp1191 – 1198.
- [4] Javad Rezaei, Mahdi Shahbakhti, Bahram Bahri and Azhar Abdul Aziz “Performance prediction of HCCI engines with oxygenated fuels using artificial neural networks”, “*Applied Energy* 138 (2015), pp460–473.
- [5] Su Han Park and Seung Hyun “Injection strategy for simultaneous reduction of NO_x and soot emissions using two-stage injection in DME fueled engine” *Applied Energy* 143 (2015) pp262–270.
- [6] K. Mathivanan, J. M. Mallikarjuna and A. Ramesh “Influence of multiple fuel injection strategies on performance and combustion characteristics of a diesel fuelled HCCI engine – An experimental investigation”, *Experimental Thermal and Fluid Science* 77 (2016) pp337–346.
- [7] Can Cinar, Ahmet Uyumaz, Seyfi Polat, Emre Yılmaz and Ozer Can, Hamit “Combustion and performance characteristics of an HCCI engine utilizing trapped residual gas via reduced valve lift” *Applied Thermal Engineering* 100 (2016) 586–594.
- [8] Hatim Machrafi, Simeon Cavadias and Jacques Amouroux “A parametric study on the emissions from an HCCI alternative combustion engine resulting from the auto-ignition of primary reference fuels” *Applied Energy* 85 (2008) 755–764
- [9] Samveg Saxena, David Vuilleumier, Darko Kozarac, Martin Kriek b, Robert Dibble b, Salvador Aceves “Optimal operating conditions for wet ethanol in a HCCI engine using exhaust gas heat recovery” *Applied Energy* 116 (2014) pp269–277.
- [10] J.Thangaraja, and C. Kannan “Effect of exhaust gas recirculation on advanced diesel combustion and alternate fuels - A review” *Applied Energy* 180 (2016) pp 169–184.
- [11] Risberg P., Kalghatgi G., and Angstrom H.E. “Auto-Ignition Quality of Diesel -Like Fuels in HCCI Engines”, *SAE Paper No. 2005-01-2127*, 2005, pp 883-893.
- [12] Myles, Bohon and William L. Roberts “NO_x emissions from high swirl turbulent spray flames with highly oxygenated fuels” *Proceedings of the Combustion Institute* 34 (2013) pp 1705–1712.
- [13] Vinícius B. Pedrozo, Ian May, Macklini Dalla Nora, Alasdair Cairns, Hua Zhao “Experimental analysis of

- ethanol dual-fuel combustion in a heavy-duty diesel engine: An optimization at low load” *Applied Energy* 165 (2016) pp166–182.
- [14] Lei Zhu, Yao Xiao, Cheung, Chun, Zhen Huang “Combustion, gaseous and particulate emission of a diesel engine fueled with n-pentanol blended with waste cooking oil biodiesel” *Applied Thermal Engineering* 102 (2016) pp73–79.
- [15] Thompson Diórdinis, Metzka Lanzanova, Macklini Dalla Nora, Hua Zhao “Performance and economic analysis of a direct injection spark ignition engine fueled with wet ethanol” *Applied Energy* 169 (2016) 230–239.
- [16] Seokhwan Lee, Seungmook Oh, Young Choi, Kernyong Kang “Performance and emission characteristics of a CI engine operated with n-Butane blended DME fuel” *Applied Thermal Engineering* 31 (2011) pp1929-1935.
- [17] Su Han Park, Chang Sik Lee “Combustion performance and emission reduction characteristics of automotive DME engine system” *Progress in Energy and Combustion Science* 39 (2013) 147-168.
- [18] Ying Wang, Yuwei Zhao, Zhongle Yang “Dimethyl ether energy ratio effects in a dimethyl ether-diesel dual fuel premixed charge compression ignition engine” *Applied Thermal Engineering* 54 (2013) pp481-487.
- [19] P. Drews, T. Albin K. Hoffmann A. Vanegas C. Felsch “Model-Based Optimal Control for PCCI Combustion Engines” 6th IFAC Symposium Advances in Automotive Control Munich, Germany, July 12-14, 2010 pp 288-293.
- [20] S. Mani Sarathy, Patrick Oßwald, Nils Hansen and Katharina “Alcohol combustion chemistry” *Progress in Energy and Combustion Science* 44 (2014) pp 40-102.
- [21] N.K. Miller Jothi, G. Nagarajan and S. Renganarayanan “Experimental studies on homogeneous charge CI engine fueled with LPG using DEE as an ignition enhancer” *Renewable Energy* 32 (2007) 1581–1593.
- [22] Dongwon Jung and Norimasa “Closed-loop control of HCCI combustion for DME using external EGR and re breathed EGR to reduce pressure-rise rate with combustion-phasing retard” *Applied Energy* 138 (2015) 315–330.
- [23] Shamla A. Mulane and S. D. Limaye “Homogeneous Charge Compression Ignition (HCCI) Engine Technology-A Review” *International Journal of Current Engineering and Technology*, Issue-4 (March 2016), pp160-164.
- [24] Rakesh Kumar Maurya, Avinash Kumar “Experimental investigation on the effect of intake air temperature and air–fuel ratio on cycle-to-cycle variations of HCCI combustion and performance parameters” *Applied Energy* 88 (2011) 1153–1163.
- [25] Annarita Viggiano and Vinicio Magi “A comprehensive investigation on the emissions of ethanol HCCI engines” *Applied Energy* 93 (2012) pp 277–287.
- [26] GunWoong Bahng, Dongsoon Jang, Youngtae Kim and Misoo Shin “A new technology to overcome the limits of HCCI engine through fuel modification” *Applied Thermal Engineering* 98 (2016) pp810–815.
- [27] Akhilendra Pratap Singh, Avinash Kumar Agarwal “Combustion characteristics of diesel HCCI engine: An experimental investigation using external mixture formation technique” *Applied Energy* 99 (2012) pp 116–125.
- [28] Youngchul Ra, Rolf D. Reitz “A combustion model for IC engine combustion simulations with multi-component fuels” *Combustion and Flame* 158 (2011) pp 69–90.
- [29] Marco Mehl, Tiziano Faravelli, Eliseo Ranzi, David Miller, Nicholas Cernansky “Experimental and kinetic modeling study of the effect of fuel composition in HCCI engines” *Proceedings of the Combustion Institute* 32 (2009) pp 2843–2850.
- [30] Bahram Bahri, Azhar Abdul Aziz, Mahdi Shahbakhti, Mohd Farid Muhamad Saidv “Understanding and detecting misfire in an HCCI engine fuelled with ethanol” *Applied Energy* 108 (2013) pp 24–33.
- [31] TaoChen, HuiXie, LeLi, Lianfang, Xinyan “Methods to achieve HCCI/CAI combustion at idle operation in a 4VVAS gasoline engine” *Applied Energy* 116 (2014) pp 41–51.
- [32] Samveg Saxena, Nihar Shah, Ivan Bedoya, Amol Phadke “Understanding optimal engine operating strategies for gasoline-fueled HCCI engines using crank-angle resolved exergy analysis” *Applied Energy* 114 (2014) pp 155–163.
- [33] Laura Manofsky Olesky, George, Dennis N. Assanis, Margaret, Jason Martz “The effects of diluent composition on the rates of HCCI and spark assisted compression ignition combustions” *Applied Energy* 124 (2014) pp 186–198.
- [34] Jesús Benajes, Santiago Molina, Antonio García, Javier Monsalve “Performance and engine-out emissions evaluation of the double injection strategy applied to the gasoline partially premixed compression ignition spark assisted combustion concept” *Applied Energy* 134 (2014) 90–101.
- [35] J. Benajes, J. Martín, R. Novella “Understanding the performance of the multiple injection gasoline partially premixed combustion concept implemented in a 2-Stroke high speed direct injection compression ignition engine” *Applied Energy* 161 (2016) pp 465–475.
- [36] Xin Wanga, Yunshan Ge, Chuanzhen Zhang “Effects of engine misfire on regulated, unregulated emissions from a methanol-fueled vehicle and its ozone forming potential” *Applied Energy* 177 (2016) 187–195.
- [37] Yang, Lixia, Mingfa “A theoretical investigation of the effects of the low-temperature reforming products on the combustion of n-heptane in an HCCI engine and a constant volume vessel” *Applied Energy* 181 (2016) 132–139.
- [38] Samad Jafarmadar, Peyman Nemati “Exergy analysis of diesel/biodiesel combustion in a homogenous charge compression ignition (HCCI) engine using three-dimensional model” *Renewable Energy* 99 (2016) pp 514-523.
- [39] Alberto Boretti “Advantages of converting Diesel engines to run as dual fuel ethanol-Diesel” *Applied Thermal Engineering* 47 (2012) pp 1-9.
- [40] Jesus Benajes, Ricardo Novella, Daniela De Lima “Analysis of the combustion process, pollutant emissions and efficiency of an innovative 2-stroke HSDI engine designed for automotive applications” *Applied Thermal Engineering* 58 (2013) 181-193.

- [41] Mina Nishi, Masato Kanehara, Norimasa Iida "Assessment for innovative combustion on HCCI engine by controlling EGR ratio and engine speed" *Applied Thermal Engineering* 99 (2016) 42–60.
- [42] Emiliano Pipitone, Giuseppe Genchi "NOx reduction and efficiency improvements by means of the Double Fuel HCCI combustion of natural gas–gasoline mixtures" *Applied Thermal Engineering* 102 (2016) 1001–1010.
- [43] Magnus Sjöberg, John E. Dec "Effects of EGR and its constituents on HCCI auto ignition of ethanol" *Proceedings of the Combustion Institute* 33 (2011) 3031–3038.
- [44] Saisirirat, Togbe, Chanchaona "Auto-ignition and combustion characteristics in HCCI and JSR using 1-butanol/n-heptane and ethanol/n-heptane blends" *Proceedings of the Combustion Institute* 33 (2011) pp 3007–3014.
- [45] A.J. Donkerbroek, M.D. Boot, C.C.M. Luijten, N.J. Dam "Flame lift-off length and soot production of oxygenated fuels in relation with ignition delay in a DI heavy-duty diesel engine" *Combustion and Flame* 158 (2011) pp 525–538.
- [46] Jean-Baptiste Masurier, Fabrice Foucher, Guillaume Dayma, Philippe Dagaut "Investigation of iso-octane combustion in a homogeneous charge compression ignition engine seeded by ozone, nitric oxide and nitrogen dioxide" *Proceedings of the Combustion Institute* 35 (2015) 3125–3132.
- [47] George Vourliotakis, George Skevis, Maria A. Founti "Some aspects of combustion chemistry of C1–C2 oxygenated fuels in low pressure premixed flames" *Proceedings of the Combustion Institute* 35 (2015) pp 437–445.
- [48] Guangyu Dong, Yulin Chen, Liguang Li, Zhijun Wu, Robert "A skeletal gasoline flame ionization mechanism for combustion timing prediction on HCCI engines" *Proceedings of the Combustion Institute* (2016) pp 1–8.
- [49] N.Ramesh, J.M.Mallikarjuna "Evaluation of in-cylinder mixture homogeneity in a diesel HCCI engine – A CFD analysis" *Engineering Science and Technology* 19 (2016) 917–925.
- [50] Mingfa Yao, Zhaolei Zheng, Haifeng Liu "Progress and recent trends in homogeneous charge compression ignition (HCCI) engines" *Progress in Energy and Combustion Science* 35 (2009) pp 398–437.
- [51] Beth Anne V. Bennett, Charles S. McEnally, Lisa D. Pfefferlea, Mitchell D. Smooke, Meredith B. Colketb "Computational and experimental study of the effects of adding dimethyl ether and ethanol to non premixed ethylene/air flames" *Combustion and Flame* 156 (2009) pp 1289–1302.
- [52] Haozhong Huang, Chengzhong Zhou, Qingsheng Liu, Qingxin Wang, Xueqiang Wang "An experimental study on the combustion and emission characteristics of a diesel engine under low temperature combustion of diesel/gasoline/n-butanol blends" *Applied Energy* 170 (2016) 219–231.
- [53] Friederike Herrmann, Bernhard Jochim, Patrick Oswald, Liming, Heinz Pitsch, Katharina Kohse Hoinghaus "Experimental and numerical low-temperature oxidation study of ethanol and dimethyl ether", *Combustion and Flame* 161 (2014) 384–397.
- [54] Efstathios, Tingas, Dimitrios, Kyritsis, Dimitris A. Goussis "Autoignition dynamics of DME/air and EtOH/air homogeneous mixtures" *Combustion and Flame* 162 (2015) pp 3263–3276.
- [55] Usman Asad, Ming Zheng "Exhaust gas recirculation for advanced diesel combustion cycles" *Applied Energy* 123 (2014) 242–252.
- [56] M.H. Mat Yasin, Talal Yusaf b, R. Mamat a, A. Fitri Yusop "Characterization of a diesel engine operating with a small proportion of methanol as a fuel additive in biodiesel blend" *Applied Energy* 114 (2014) 865–873.
- [57] Su Han Park, Chang Sik Lee "Combustion performance and emission reduction characteristics of automotive DME engine system" *Progress in Energy and Combustion Science* 39 (2013) 147–168.
- [58] Risberg P, Kalghatgi and Hans Erik A (2005) Auto-ignition quality of diesel like fuels in HCCI engines, SAE, 2005-01-2127, 883-893.
- [59] Rudolf HS and Charles E R "Homogeneous charge compression ignition (HCCI): benefits, compromises, and future engine applications, SAE, 1999-01-3682, 2138-2145
- [60] Lílían Lefol Nani Guarieiro, Egídio Teixeira de Almeida "Assessment of the use of oxygenated fuels on emissions and performance of a diesel engine" *Microchemical Journal* 117 (2014) pp94–99.
- [61] D. D .Nagdeote1, M. M. Deshmukh2 " Experimental Study of Diethyl Ether and Ethanol Additives with Biodiesel-Diesel Blended Fuel Engine" *International Journal of Emerging Technology and Advanced Engineering* ISSN 2250-2459, Volume 2, Issue 3, March 2012.
- [62] Aceves, S.M., Flowers, D.L., Frias, J.M., and Smith J.R. "HCCI Combustion: Analysis and Experiments", SAE Paper No. 2001-01-2077, 2001.
- [63] Lee, S and Reitz R.D. "Spray Targeting to Minimize Soot and CO Formation in Premixed Charge Compression Ignition (PCCI) Combustion with a HSDI Diesel Engine", SAE Paper No. 2006-01-0918, 2006, pp. 532- 540.
- [64] Lida, M., Hayashi, M., Foster, D.E., and Martin, J.K. "Characteristics of Homogeneous Charge Compression Ignition Engine Operation for Variations in Compression Ratio, Speed, and Intake Temperature While Using n- Butane as a Fuel", ASME, Volume. 125, 2003, pp 472- 478.
- [65] Mark.P.B.M. "Multiple Simulations Optical Diagnostics Imaging of Early-Injection Low-Temperature Combustion in a Heavy-Duty Diesel Engine", SAE Paper No. 2006-01-0079, 2006, pp. 83-110.
- [66] Ryu, J., Kim, H. "A study on the Spray Structure and Evaporation Characteristic of Common Rail High Pressure Injector in Homogeneous Charge Compression Ignition Engine", Elsevier, Fuel, Volume. 85, 2005.
- [67] Ishima T., Matsuda T., Shiga S., Araki M, Nakamura and Obokata "Characteristics of HCCI Diesel Combustion Operated with a Hollow Cone Spray", SAE Paper No. 2003-01-1823, 2003, pp. 1188-1194.

- [68] Bunting, B.G., Eaton, E.J., and Crawford “Performance Evaluation and Optimization of Diesel Fuel Properties and Chemistry in an HCCI Engine”, SAE Paper No. 2009-01-2645, 2009.
- [69] Ozaki J, Iida N. Effect of degree of unmixedness on HCCI combustion based on experiment and numerical analysis. SAE paper 2006-32-0046; 2006.
- [70] Suyin Gan, Hoon Kiat Ng, Kar Mun Pang “Homogeneous Charge Compression Ignition (HCCI) combustion: Implementation and effects on pollutants in direct injection diesel engines” Applied Energy 88 (2011) pp 559–567.
- [71] K. Appa Rao, K. Rajagopal “Experimental investigations on CI engine in HCCI and conventional diesel mode”, Indian Journal of Science and Technology Vol. 3 No. 12 (Dec 2010) ISSN: 0974- 6846, pp 1180-1182.
- [72] Y. Tsutsumi, A. Iijima, K. Toshida, H. Shoji, J.T.H.C.C.I. Lee, Combustion characteristics during operation on DME and methane fuels, International Journal of Automotive Technology 10 (6) (2009) 645-652.
- [73] T. Murayama, N. Miyamoto, T. Yamada, J. Kawashima, K. Itow, A Method to Improve the Solubility and Combustion Characteristics of Alcohol-Diesel Fuel Blends SAE Paper 821113 (1982).
- [74] Crookes, R.J. Bob-Manuel, “Di-methyl ether or rapeseed methyl ester: a preferred alternative fuel option for future diesel engine operation” Proceedings of the fifth international colloquium on fuels, 2005, pp. 181-187.
- [75] Z. Chen, M. Konno, M. Oguma, T. Yanai, “Experimental study of CI natural-gas/DME homogeneous charge engine” SAE Transactions Journal of Engines 109(3) (2000) pp 442-451.
- [76] K. Yeom, J. Jang, C. Bae, Homogeneous charge compression ignition of LPG and gasoline using variable valve timing in an engine, Fuel 86 (4) (2007) 494-503.
- [77] Kim D.S., and Lee C.S. “Improved Emission Characteristics of HCCI Engine by Various Premixed Fuels and Cooled EGR”, Elsevier, Fuel, Volume. 85, 2006, pp 695-704.
- [78] Han D, Ickes AM, Bohac SV, Huang Z, Assanis DN. HC and CO emissions of premixed low-temperature combustion fueled by blends of diesel and gasoline” Fuel 2012; 99:13-9.
- [79] Ying W, Longbao Z. Experimental study on exhaust emissions from a multicylinder DME engine operating with EGR and oxidation catalyst. Appl Therm Eng 2008;28: 1589-95.
- [80] Kim MY, Yoon SH, Park KH, Lee CS. Effect of multiple injection strategies on the emission characteristics of dimethyl ether (DME) fueled compression ignition engine. Energy Fuel 2007,21: pp 2679-81.
- [81] Petersen BR, Ekoto IW, Miles PC. Optical investigation of UHC and CO sources from biodiesel blends in a light-duty diesel engines operating in a partially premixed combustion regime” SAE tech paper; 2010. SAE 2010-01-0862.
- [82] Chen Z, Konno M, Goto S. Study on homogeneous premixed charge CI engine fueled with LPG. JSAE Rev 2001;22: 265-70.
- [83] Yeom K, Bae C. “Knock characteristics in liquefied petroleum gas (LPG)- dimethyl ether (DME) and gasoline-DME homogeneous charge compression ignition engines” Energy Fuel 2009;29: 1956-64.
- [84] Heywood J.B. “Internal Combustion Engine Fundamentals”, McGraw-Hill Series, New Delhi, 2011.
- [85] Ganesan V. “Internal Combustion Engines”, Tata McGraw-Hill Publishing Company Limited, New Delhi, Third Edition, 2011.
- [86] Yang Jian-guang, Zhang Wu-gao, Huang Zhen “Effect of cetane number improver on heat release rate and emissions of high speed diesel engine fueled with ethanol–diesel blend fuel” Fuel, Volume 83, Issues 14–15, October 2004, Pages 2013–2020.
- [87] Iida N. Combustion analysis of methanol-fueled active thermo-atmosphere combustion (ATAC) engine using a spectroscopic observation. SAE paper 940684; 1994
- [88] Li T, Okabe Y, Izumi H, Shudo T, Ogawa H. Dependence of ultra-High EGR low temperature diesel combustion on fuel properties. SAE paper 2006-01-3387; 2006.
- [89] Potter M, Durrett R, Motors G. Design for compression ignition high-efficiency clean combustion engines. 12th Annual diesel engine emissions reduction (DEER) conference; 2006.
- [90] Swapnil P. Awate, “Efficiency Improvement and Reduction of Emissions through Homogeneous charge Compression Ignition in Automotive Engines” First Annual Progress Seminar Report, Department of Mechanical Engineering, IIT Bombay, 2013.
- [91] K. John Samuel, R. Thundil Karuppa Raj, N. Sreenivasulu, Y. Rajasekhar, G. Edison and Arun Saco “An Experimental Study on Performance and Emissions of a Direct Ignition Diesel Engine with Crude Pongamia, Pongamia Methyl Ester and Diethyl Ether Blended with Diesel” International Journal of Renewable Energy Research vol.6, No.4, 2016, pp 1506-1515.
- [92] K. Nanthagopal, B. Ashok, R. Thundil Karuppa Raj, Shantanu Jathar, K. John samuel, Rahul krishnan, Thusar Sathyanand, S. Logesh “Lemon Essential oil – A Partial Substitute for Petroleum Diesel Fuel in Compression Ignition Engine” International Journal of Renewable Energy Research Vol.7, No.2, 2017, pp 467-475.
- [93] Puneet Verma, M.P. Sharma, Gaurav Dwivedi “Operational and Environmental Impact of Biodiesel on Engine Performance: A review of Literature” International Journal of Renewable Energy Research Vol.5, No.4, 2015, pp 961-970.